

311177 TYPE MS-104-A SWITCH.  
INDEX E-3532

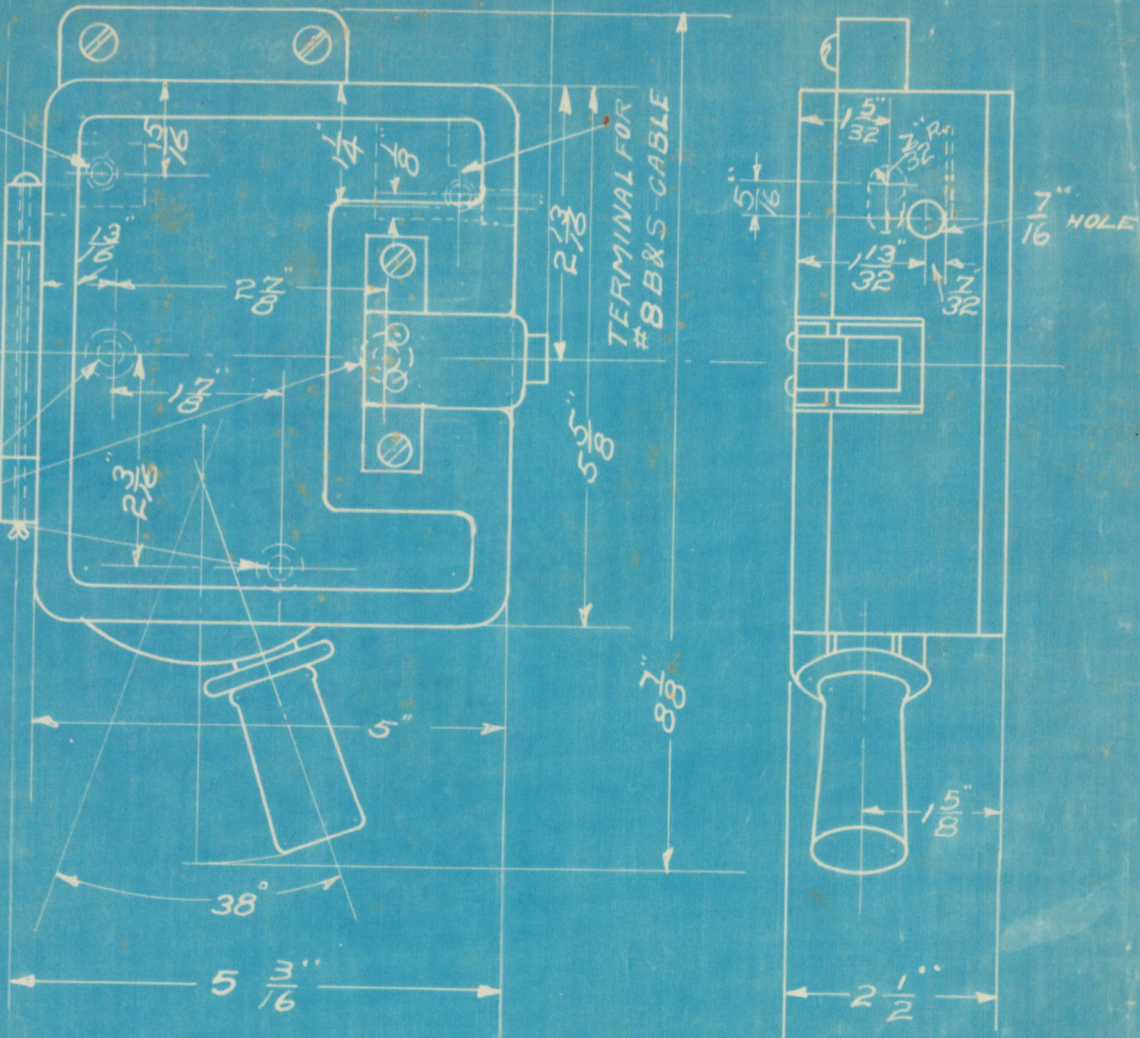


THIRD ANGLE PROJECTION

$5\frac{7}{8}$ " APPROX

TERMINAL FOR  
#8 & #10 B&S CABLE

HOLES FOR  
#0 BRITISH  
ASSOCIATION STD.  
SUPPORTING  
SCREW



THE SUPPORTS OF THIS APPARATUS MUST BE INSULATED FROM GROUND.

OUTLINE VICTORIAN R.W.Y.  
M.S.-104-A-SWITCH REQ-I-54850 APPROVED  
GENERAL ELECTRIC COMPANY, SCHENECTADY, N. Y.

REVISED DEC. 16, 25

RC DRAWN BY J. KAHN AUG. 14, 1913.

INSPECTED E. Dietrich, OCT. 31, 13

K1190482